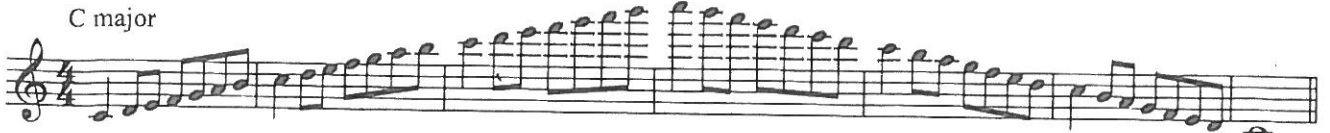


Violin Scale Sheet

C major



G major



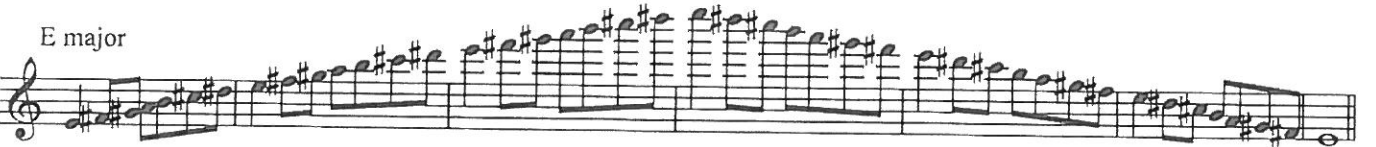
D major



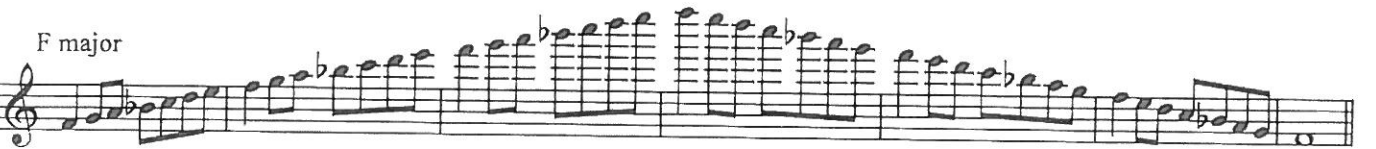
A major



E major



F major



Bb major



Eb major



Ab major



Violin Scales (cont.)

64 *D^b major* 65 66 67

Musical notation for the D^b major scale, measures 64-67. The scale is written in treble clef with a 4/4 time signature. It consists of eighth notes: D^b, E^b, F^b, G^b, A^b, B^b, C, D, E, F, G, A, B, C, D.

68 69 70 71 *B major*

Musical notation for the B major scale, measures 68-71. The scale is written in treble clef with a 4/4 time signature. It consists of eighth notes: B, C[#], D, E, F[#], G[#], A, B, C[#], D, E, F[#], G[#], A, B.

72 73 74 75

Musical notation for the B major scale, measures 72-75. The scale is written in treble clef with a 4/4 time signature. It consists of eighth notes: B, C[#], D, E, F[#], G[#], A, B, C[#], D, E, F[#], G[#], A, B.

13 76 77 78 *A melodic minor* 79

Musical notation for the A melodic minor scale, measures 76-79. The scale is written in treble clef with a 4/4 time signature. It consists of eighth notes: A, B, C, D, E, F, G, A, B, C, D, E, F, G, A.

17 80 81 82 83 84 *E melodic minor*

Musical notation for the E melodic minor scale, measures 80-84. The scale is written in treble clef with a 4/4 time signature. It consists of eighth notes: E, F, G, A, B, C, D, E, F, G, A, B, C, D, E.

85 86 87 88 89 *D melodic minor*

Musical notation for the D melodic minor scale, measures 85-89. The scale is written in treble clef with a 4/4 time signature. It consists of eighth notes: D, E, F, G, A, B, C, D, E, F, G, A, B, C, D.

90 91 92 93 94 *B melodic minor*

Musical notation for the B melodic minor scale, measures 90-94. The scale is written in treble clef with a 4/4 time signature. It consists of eighth notes: B, C, D, E, F, G, A, B, C, D, E, F, G, A, B.

95 96 97 98 *G melodic minor*

Musical notation for the G melodic minor scale, measures 95-98. The scale is written in treble clef with a 4/4 time signature. It consists of eighth notes: G, A, B, C, D, E, F, G, A, B, C, D, E, F, G.

